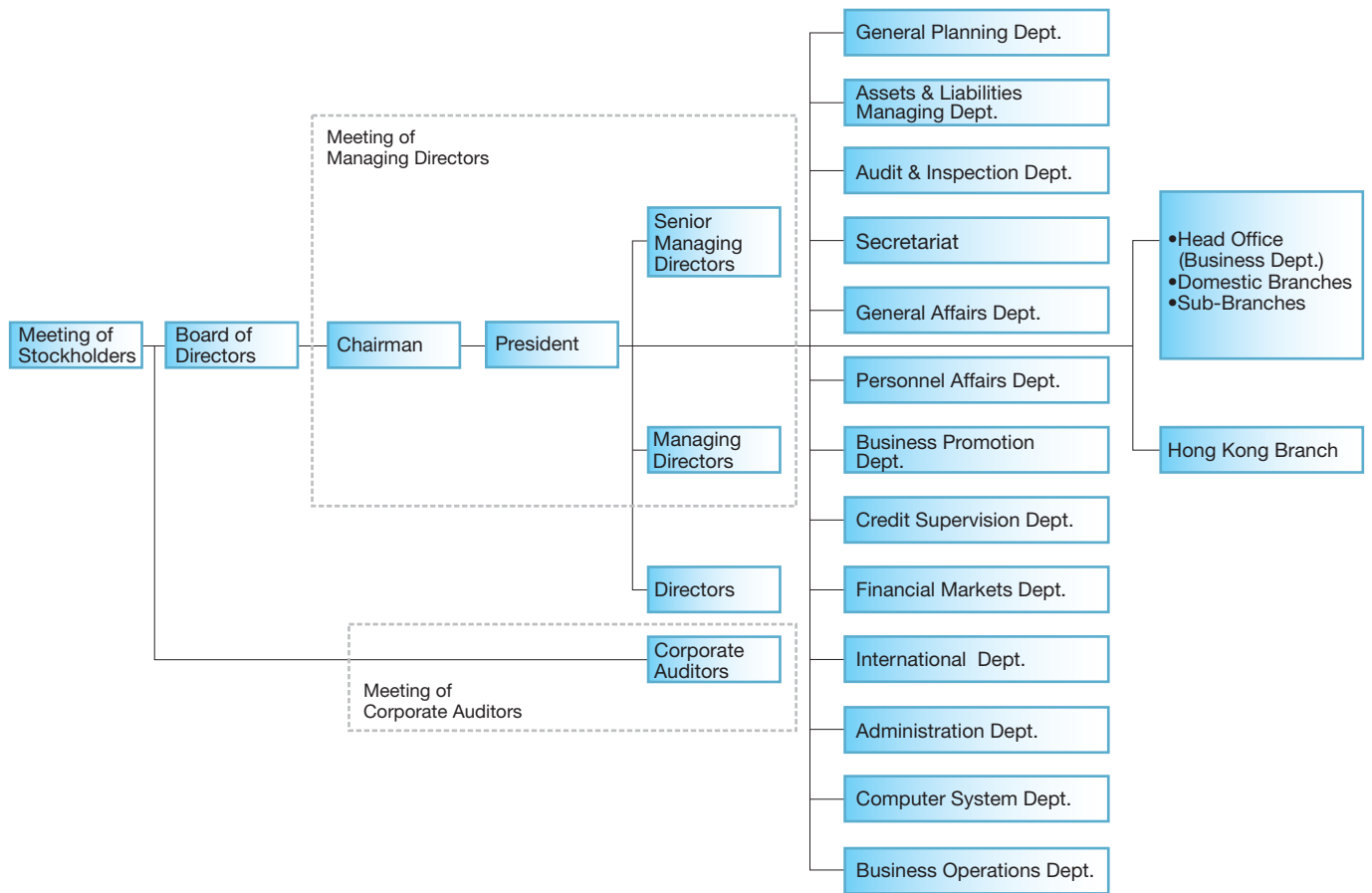


Organization Chart

As of June 30, 2009



Board of Directors

As of June 25, 2009

Chairman

Koichi Takata

President

Yoshio Daido

Senior Managing Director

Kazuo Isobe

Managing Directors

Etsuo Mori

Yasuhiko Inoue

Hiroshi Nakagawa

Ikuo Yoshida

Yukio Nishizawa

Directors

Shigeru Tamura

Susumu Ota

Norio Inoue

Shojiro Takahashi

Shinichi Kodama

Kenzaburo Nishikawa

Hiroshi Oku

Hajime Moroto

Etsuo Imai

Corporate Auditors

Minoru Fujii

Masamichi Mizutani

Jingoro Nishikawa

Tadashi Yasuhara