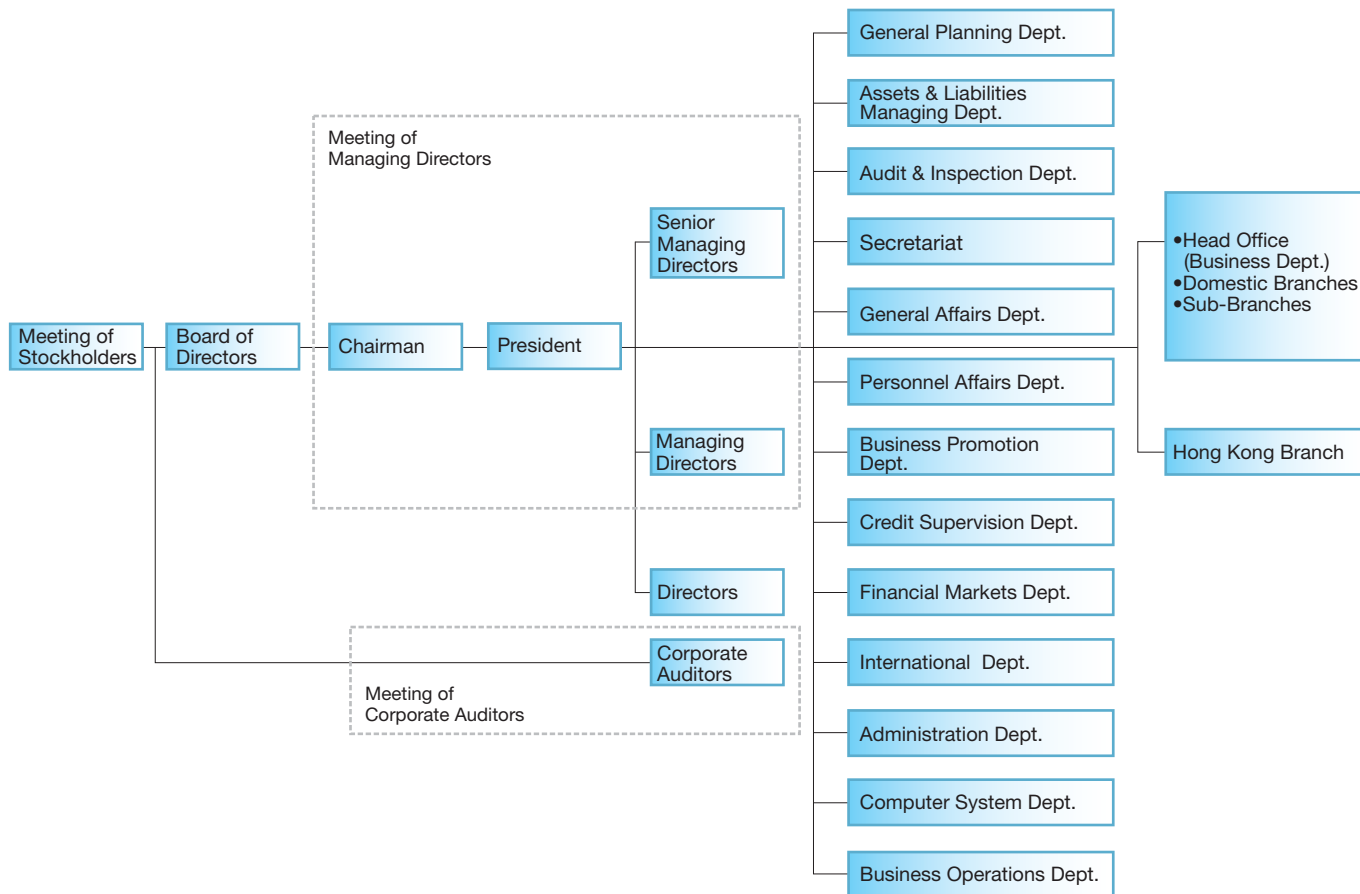


# Organization Chart

As of June 30, 2009



## Board of Directors

As of June 25, 2009

### Chairman

Koichi Takata

### President

Yoshio Daido

### Senior Managing Director

Kazuo Isobe

### Managing Directors

Etsuo Mori

Yasuhiko Inoue

Hiroshi Nakagawa

Ikuo Yoshida

Yukio Nishizawa

### Directors

Shigeru Tamura

Susumu Ota

Norio Inoue

Shojiro Takahashi

Shinichi Kodama

Kenzaburo Nishikawa

Hiroshi Oku

Hajime Moroto

Etsuo Imai

### Corporate Auditors

Minoru Fujii

Masamichi Mizutani

Jingoro Nishikawa

Tadashi Yasuhara