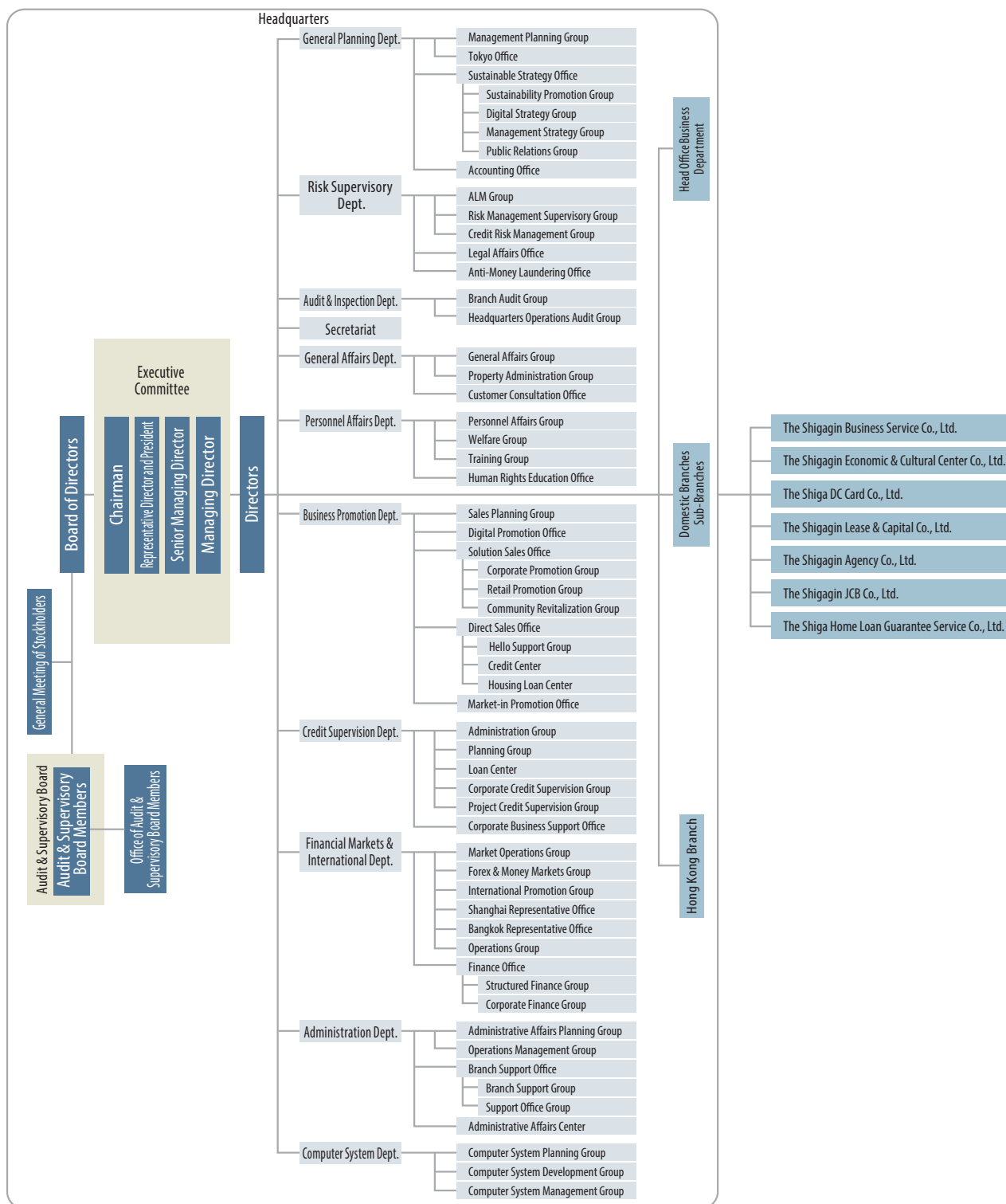


FINANCIAL SECTION

Organization Chart (As of June 27, 2023)



Profile

(As of March 31, 2023)

Corporate Name :	THE SHIGA BANK, LTD.
Head Office :	1-38, Hamamachi, Otsu, Shiga 520-8686, Japan
Established :	October 1, 1933
Total Assets :	¥7,281.9 billion
Deposits :	¥5,762.4 billion
Loans :	¥4,360.2 billion
Common Stock :	¥33.0 billion
Employees :	1,915
Offices and Branches :	133 (including 33 agents)